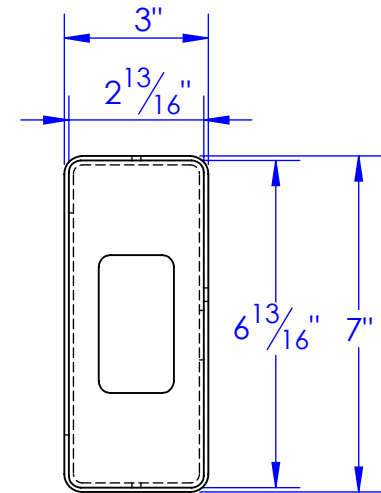
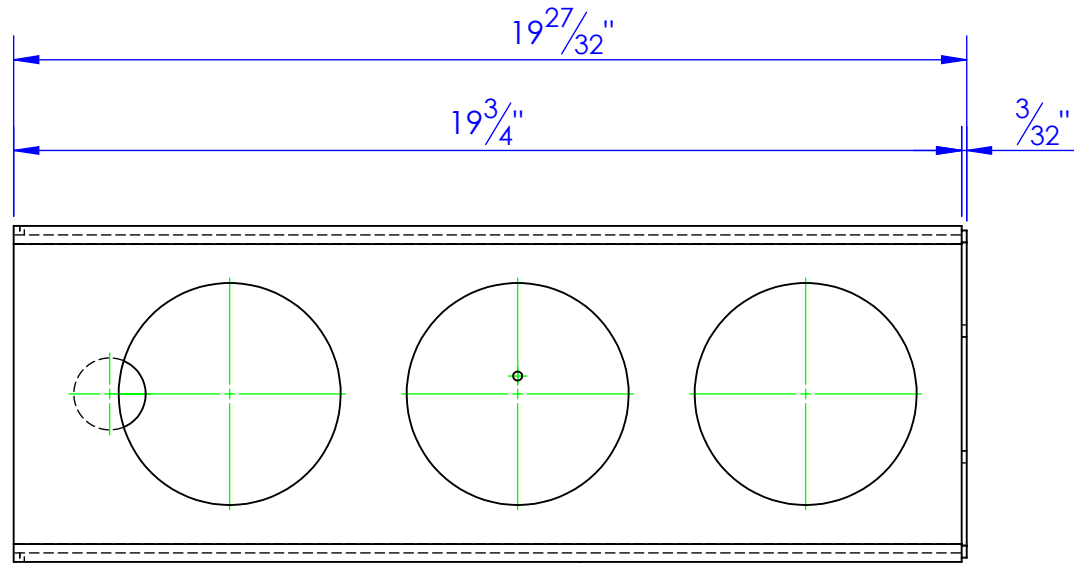


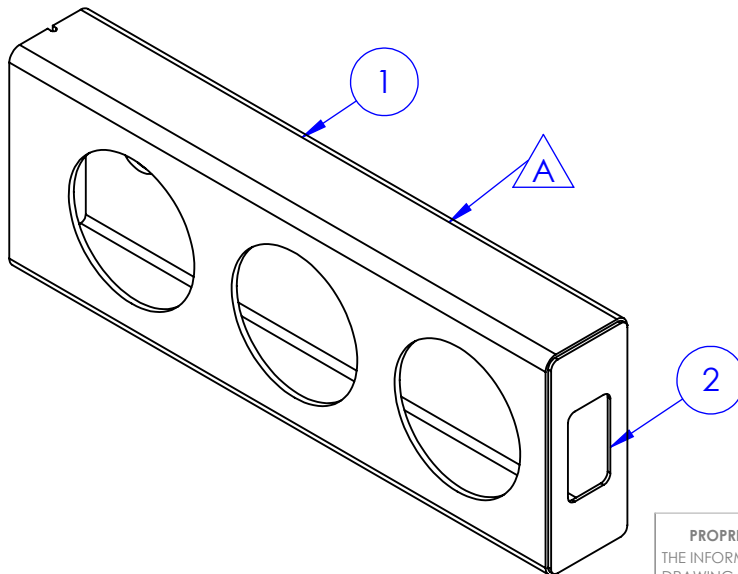
ITEM NO.	PART NUMBER	DESCRIPTION	MATERIAL	DRAWING #	QTY.
1	FP-RT-LH2044	TAIL LIGHT HOUSING, TUBING THREE HOLE	TUBING 7x3x3/16" L:19-3/4"	10-2606	1
2	FP-SM-LH2044B	END CAP, TAIL LIGHT HOUSING	12ga HRS	10-2601	1

REVISIONS			
REV.	DESCRIPTION	DATE	APPROVED
A	INITIAL RELEASE	1/25/2012	



PASSENGER
TAIL LIGHT
SHOWN

NOTES:
1. TAIL LIGHT HOUSING IS RIGHT AND LEFT HAND



PROPRIETARY AND CONFIDENTIAL
THE INFORMATION CONTAINED IN THIS
DRAWING IS THE SOLE PROPERTY OF TRIPLE
C INC. ANY REPRODUCTION IN PART OR
AS A WHOLE WITHOUT THE WRITTEN
PERMISSION OF TRIPLE C INC. IS PROHIBITED.

DIMENSIONS ARE IN INCHES
TOLERANCES:
FRACTIONAL $\pm 1/16$
ANGULAR: MACH ± 1 BEND \pm
TWO PLACE DECIMAL ± 010
THREE PLACE DECIMAL ± 005

MATERIAL ---
DO NOT SCALE DRAWING

NAME	DATE
DRAWN HEATH	1/31/2012
PART # RE-RT-LH2044	
ASM #	
COMMENTS: TAIL LIGHT HOUSING DETAIL, TUBING LIGHT 3 HOLE	

P.O. BOX 248,
SABETHA, KS 66534

TRIPLE C
INC.

SIZE	DWG. NO.	REV.
A	10-1603	A
SCALE: 1:4	WEIGHT: 17.36 LBS	SHEET 1 OF 1